



POTTO PARISH COUNCIL

Potto

**December
2022**

2022 - A Year of Challenges



Inside this issue:

2022	2
Heating Array	4
Wildlife	5
Jubilee Project	7

A Very Merry Christmas and a Happy New Year to everyone in the Parish of Potto from your Parish Council;

Andy, Elma, Ian, Shaun, Steve, and Joanne

2022—A Very Challenging Year !

2022 When we thought that the worst was behind us, with vaccines to tackle covid-19 and things opening up following three years of uncertainty, life throws us another set of challenges !!! We have a succession of governmental changes with new Prime Ministers, Ministers and Policies, and the associated changes each one of these brings. These do however bring a small glimmer of hope in that our MP Rishi Sunak was voted in as the new Prime Minister, lets hope that he carries the hopes and wishes of his constituents into parliament.



.The war in Ukraine has brought the plight of ordinary citizens into sharp focus, and directly into our living rooms.

People around the world have offered assistance to citizens fleeing the bloodshed, providing aid and welcoming them into their homes. It is appropriate the we support this nation in its struggle against oppression and pray for a peaceful outcome to their struggle.

One of the effects of this confrontation has been the extraordinary increase in fuel costs that have been experienced around the world, sparking off a global recession. We have already seen price rises across the whole supply chain with increases in basic food-stuffs, energy, and associated consumer goods. This has led to union unrest and we seem to be heading into another “Winter of Discontent”

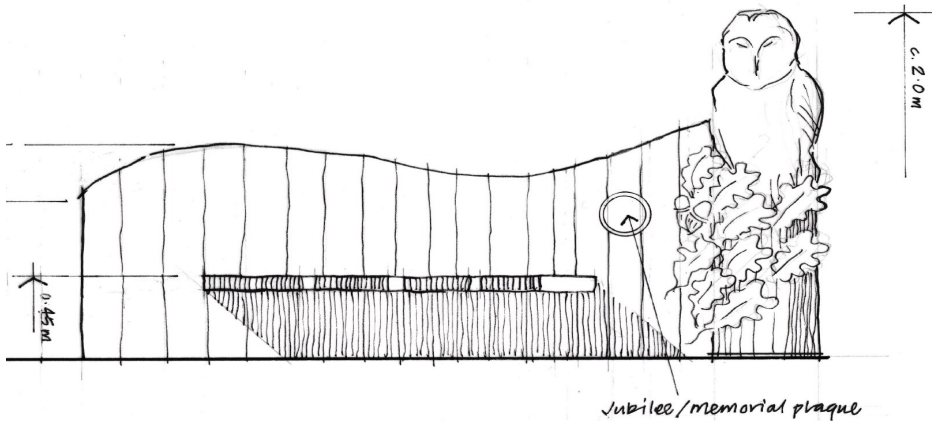
However signs are that this is beginning to slow down, so hopefully as we approach the end of the year we can welcome the new Year with renewed hope and a sense of optimism for a better World in 2022.

The Parish Council has continued to work with our partners to move forwards in a positive way in-order to improve the parish for the benefit of all our residents, if you wish to join the any of our regular meetings please contact the Clerk.

Jubilee / Memorial Project

The parish council were working on a project to celebrate the Jubilee of Her Majesty Queen Elizabeth II. With the death of the Queen earlier this year it was agreed that this project could also serve as a suitable memorial from the people of Potto to Her Majesty the Queen. The scheme is for an integrated seating area and memorial plaque.

The seating area is planned to be located on the area of land adjacent to the corner of the Bridleway to Swainby and a draft scheme is shown below. A grant of £1,000 has been received from Hambleton District Council and our thanks go to District Cllr Bridget Fortune for her help in securing this funding.



Bridge Survey

Councillors undertook a survey of all the footbridges on a wet and cold day in the parish recently. Assessing their condition and clearing undergrowth where required. Signs were also erected on the bridleway to advise users to consider others when using the right of way.

The annual Stel inspection will be carried out in the New Year to access the stells and ensure that they are running free.

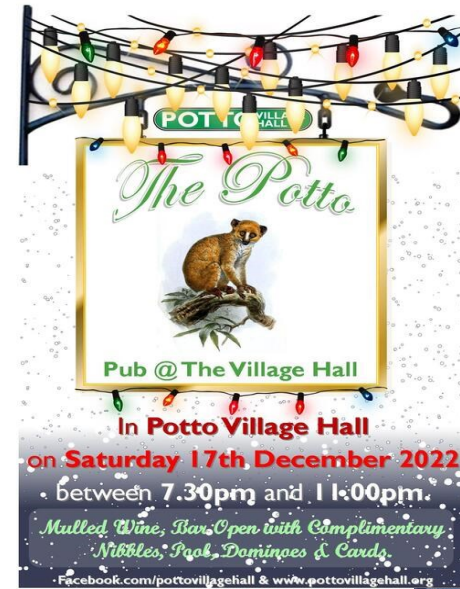


Sparkle at Potto Pub Night

On Saturday 17th December

Why not walk to the Pub through the village Xmas Lights - you could tour them before coming into the warm!

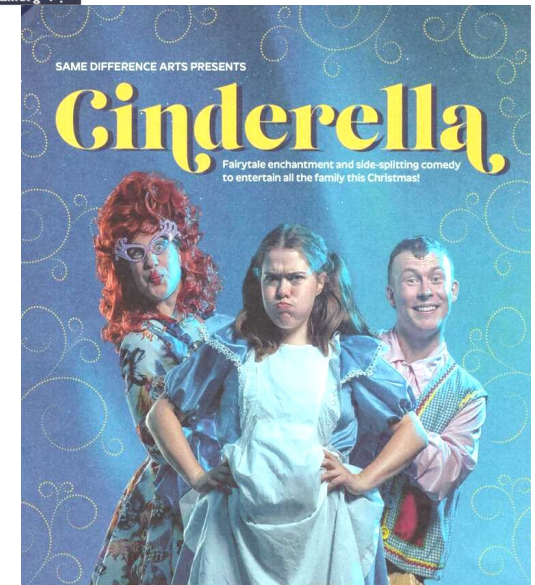
Then it's mulled wine, nibbles, bar open & pool, and, of course, lots of festiveness!



The Panto is Back Cinderella

A show by Dame Ruth with Same Difference Arts
On Thursday 29th December
Tickets: £10, £5 children from 01642 700112 or pottovillagehall@gmail.com.

This classic family pantomime, Combining fairy-tale enchantment with side-splitting comedy, this year's panto will leave the whole family entertained and enchanted!



Please contact Potto Parish Council at PottoPC@btinternet.com, if you would like to contribute to the newsletter.

Footpath Maintenance

While the Parish Council is working hard to improve the footpath network within the parish, it remains the responsibility of the land owners who own the land that the footpaths cross to comply with the statutory requirements of the Highways Act 1980.

Under these regulations the landowner is responsible for;

Cutting back vegetation from the sides and from above (the footpath but not from the surface) so that it does not inconvenience the public or prevent the line of the right of way being apparent on the ground: allowing a minimum of 3 metres (10 feet) headroom on bridleways, and byways open to all traffic.



It is also the responsibility of landowners to maintain stiles and gates in a safe condition.

While it is the responsibility of the landowner to keep cross field paths clear and open, it is up to the County Council to maintain the surface of the footpath free of vegetation.

Not all public rights of way are the same, different categories of public rights of way have different widths, the widths are specified by reference to the Rights of Way Act 1990 and are dependent upon whether the footpaths have cross-field or headland status.

Rights of way	Minimum width
Cross-field footpath	1 metre
Field-edge footpath	1.5 metres undisturbed
Cross-field bridleway	2 metres
Field-edge bridleway	3 metres undisturbed
Cross-field BOAT*	3 metres undisturbed
Field-edge BOAT*	5 metres undisturbed

BOAT—Byway open to all traffic

Councillors and volunteers have invested a lot of time and effort maintaining public rights of way in-order to keep the footpaths in good condition for everyone to enjoy.

We would like to thank landowners for supporting the Parish Council in our efforts to improve and maintain one of our greatest assets, access to the countryside for everyone.

Stell Inspection

In September, we undertook the Bi Annual inspection of the Potto Stell system. The stell network is a combination of open and culverted waterways that directs the water from field drains through the residential areas of Potto and finally drains into Potto Beck. This ensures that the low-lying areas of Potto are adequately drained behind the flood barrier.

Residents are to be commended for maintaining the stell system in good order. A few areas of improvement were noted and these were followed up with the land owners.

Parish Plan

The 2018 - 2028 Potto Plan has now entered the second year of its term. The current plan builds upon the great work carried out in the initial 2008—2018 plan. The Parish Plan reflects the views of Potto residents obtained from the Parish Plan Questionnaire; it provides a democratic guide for Potto Parish Council and other public bodies in order to influence how our community manages change and develops over the next five to ten years.

The Parish Council agreed to adopt the Parish Plan and monitor and help implement the Action Plan with the assistance of other bodies and volunteer parishioners.

Currently the majority of the actions in the plan have either been addressed or are in progress.

Cycle Routes

Councillors are working with Sustrans and NYCC to explore a number of enhancements to the current cycle network in the area , these include;

- Re-routing NCN65 through Osmotherley
- Re-route to Swainby using Back Lane (part of North York Moors Cycleway), which avoids cyclists speeding down Shepherds Hill
- Moving the crossing of A172 to High St. / Swainby Ellers junction .
- Re-routing via Cooper Ln. bridleway into Potto (which may require further improvement to meet NCN standard as discussed) and away from current Blackhorse Ln. alignment
- Re-route along Station Ln. into Hutton Rudby (less traffic than Blackhorse Ln.)

Sustrans are the custodians of the National Cycle Network;

Home - Sustrans.org.uk

It is hoped to feed this realignment into the Network Development planning process including North Yorkshire County Council highways and Hambleton DC, hopefully leading to some action on the ground in terms of new signing, A-road crossing safety measures, quiet way treatment for the on-road sections etc.

Bridge Over Swainby Ellers



The Parish Council in partnership with Swainby Parish Council and the NY County Councillors have been working closely with NYCC highways in-order to implement plans to improve the current footbridge over Swainby Ellers.

We will be replacing the existing footbridge with a wider bridge to allow pushchairs, wheelchairs etc to use the crossing. The project is part of the Parish Councils on-going efforts to provide open access to all, on the footpaths throughout the parish. The Covid-19 pandemic has highlighted the need for exercise in the open air,

And a marked increase in the usage of footpaths in the parish has been noted, in particular the route of Cooper Lane connecting the parish to Swainby. Funding for the project has been shared between Swainby and Potto Parish Councils with financial support from County Councillors David Hugill and Bryn Griffiths. In addition NYCC Highways will fund the installation of the bridge and supporting infrastructure..

This has been a truly collaborative initiative and has shown how projects of this nature can be realised by engaging with partners and stakeholders.

Traffic Calming in the Village

One of the items highlighted in the Potto Parish Plan was reducing the speed of traffic within the village.

The Parish Council together with Crathorne and Seamer Parish Councils submitted a joint bid to North Yorkshire Police, Fire and Crime Commissioner AJ1 Project Road Safety fund and have been successful in securing a grant to fund a radar speed sign to be shared between the three Parishes.

An initial speed survey was undertaken in the village during June and although we were in the grip of lockdown the results of the survey were clearly worrying. While an average for the period was around 36 mph some vehicles were recorded going through the village at between 60 and 65 mph !!



These speeds while being excessive for the village are also extremely dangerous for residents, their families and their pets. Hopefully this road safety initiative will help reduce speeds through the village, and make Potto a safer place., however we all need to be aware of the speed limits and "Kill our Speed"

Make Potto Sparkle



Make Potto Sparkle is a great initiative for the festive season, especially with the challenging year that we have all had to endure. Decorations are already going up in the village as well as the Christmas Tree at the Church. Many homes are already lighting the way to a better year in 2021 for all of us.